

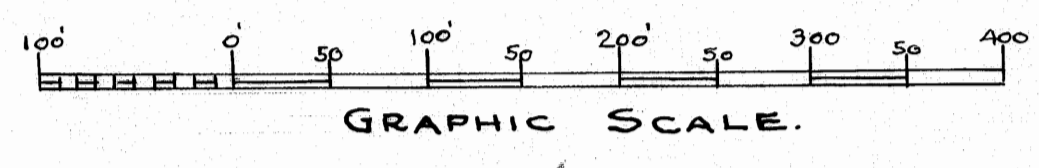
SNUG HARBOR

A SUBDIVISION OF ALL OF GOV'T LOT 5, SECTION 35,
AND PART OF GOV'T LOT 3, SECTION 34, TWP 37 S, RGE 41 E,
AND PART OF GOV'T LOTS 3 & 2, SECTION 2, AND PART
OF GOV'T LOT 1, SECTION 3, TWP 38 S, RGE 41 E.

MARTIN COUNTY, FLORIDA.

DECEMBER 1945.

SCALE 1"=100 FT.



SHEET ONE - OF TWO SHEETS

SHEET ONE & TWO DEDICATION

STATE OF FLORIDA }
COUNTY OF MARTIN } SS

KNOW ALL MEN BY THESE PRESENTS: THAT THE
SNUG HARBOR CORPORATION, A CORPORATION
ORGANIZED AND EXISTING UNDER THE LAWS OF
THE STATE OF FLORIDA AND AUTHORIZED TO DO
BUSINESS IN FLORIDA, HAS CAUSED THE ATTACHED
PLAT TO BE MADE AND THE LAND SUBDIVIDED AS
INDICATED ON THIS PLAT AND DOES HEREBY
DEDICATE FOR THE PERPETUAL PRIVATE USE OF THE
LOT OWNERS "WELLS ROAD, HARBOR POINT ROAD, AND
EASEMENTS SHOWN HEREON; RESERVING, HOWEVER,
UNTO ITSELF ITS LEGAL REPRESENTATIVE OR ASSIGNS
THE REVERSION OR REVERSIONS THEREOF WHENEVER
ABANDONED, DEED STIPULATIONS VIOLATED OR DISCONTINUED
BY LAW.

THIS 9th DAY OF January 1946.

SNUG HARBOR CORPORATION

W. Lippincott
PRESIDENT

ATTEST: *G. J. Peterson*
SECRETARY

ACKNOWLEDGEMENT

STATE OF ILLINOIS }
COUNTY OF COOK } SS

BEFORE ME THIS DAY PERSONALLY APPEARED
W.A. LIPPINCOTT AND G.J. PETERSON, PRESIDENT AND
SECRETARY, RESPECTIVELY, OF THE "SNUG HARBOR
CORPORATION" AND ACKNOWLEDGED THAT THEY EXECU-
TED THE DEDICATION HEREON SHOWN FOR THE PURPOSES
AND USES THEREIN STATED ON BEHALF OF THE SAID
CORPORATION.

WITNESS MY HAND AND OFFICIAL SEAL THIS 9th DAY OF
January 1946

C. A. Metzelder
NOTARY PUBLIC

MY COMMISSION EXPIRES
July 13-1948

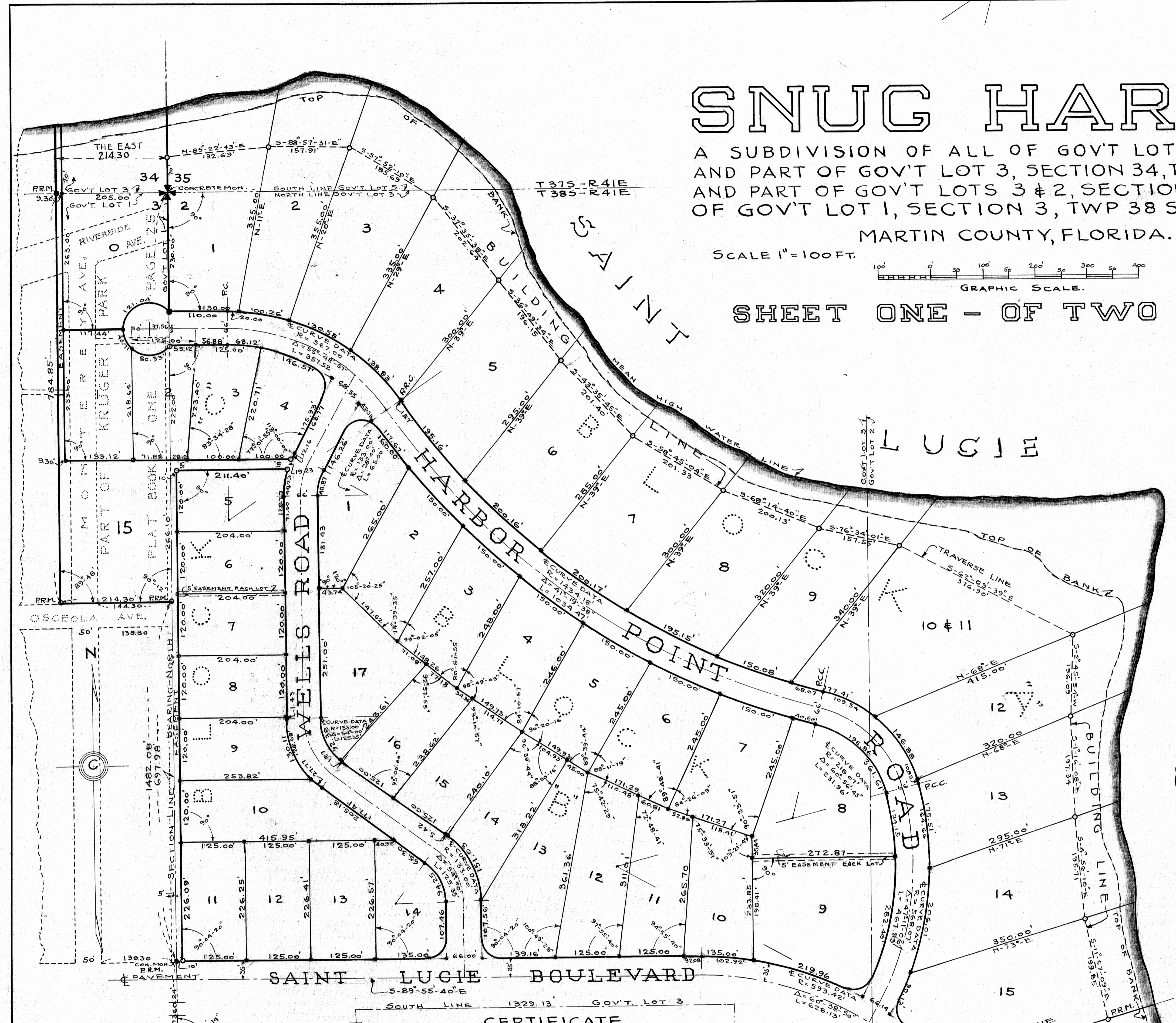
APPROVED 21 Jan. 1946
BOARD OF COUNTY COMMISSIONERS

BY: *Frank A. Stafford*
County Eng'r.

REFERENCES:
MAPS T-13, T-75.
F.B. J-7, PGS. 15-27.
F.B. J-11, PGS. 33-42.
F.B. V-7, PGS. 44-56.

IN 2 SHEETS SHEET NO. 1.
GEO. W. CARR.
REGISTERED CIVIL ENGINEER & LAND SURVEYOR
FLORIDA CERTIFICATES NO'S 173-140.
WEST PALM BEACH, FLORIDA.

DRAWING NO. 2365.



NOTE:
ALL RADII AT STREET INTERSECTIONS - 25 FEET
10 FOOT EASEMENT ON REAR OF LOTS - BLOCK "B"
FOR UTILITY PURPOSES.
10 FOOT EASEMENT ON REAR OF LOTS - BLOCK "A",
ALONG NORTHEASTERLY EDGE HARBOR POINT
ROAD FOR UTILITY PURPOSES.
PERMANENT REFERENCE MONUMENTS SHOWN - 0
CONCRETE MONUMENTS AT LOT CORNERS
ON ROADS - 0
IRON PIPE AT LOT CORNERS - IN REAR OF LOTS - 0
IRON PIPE AT CURVE POINTS EACH SIDE OF ROADS - 0

CERTIFICATE

STATE OF FLORIDA }
COUNTY OF PALM BEACH } SS
I HEREBY CERTIFY THAT I HAVE SURVEYED AND
PLATTED THE TRACT OF LAND SHOWN ON THE ATTACHED
PLAT AS "SNUG HARBOR" AND THAT SAID PLAT IS A
CORRECT REPRESENTATION THEREOF TO THE BEST
OF MY KNOWLEDGE AND BELIEF AND THAT PERMANENT
REFERENCE MONUMENTS HAVE BEEN PROPERLY PLACED
AS REQUIRED BY LAW.

George Carr
REGISTERED LAND SURVEYOR
FLORIDA CERTIFICATE NO. 140.

SUBSCRIBED AND SWORN TO BEFORE ME
THIS 18th DAY OF January 1946.

G. L. Callaway
NOTARY PUBLIC

MY COMMISSION EXPIRES *Aug. 17, 1949*

